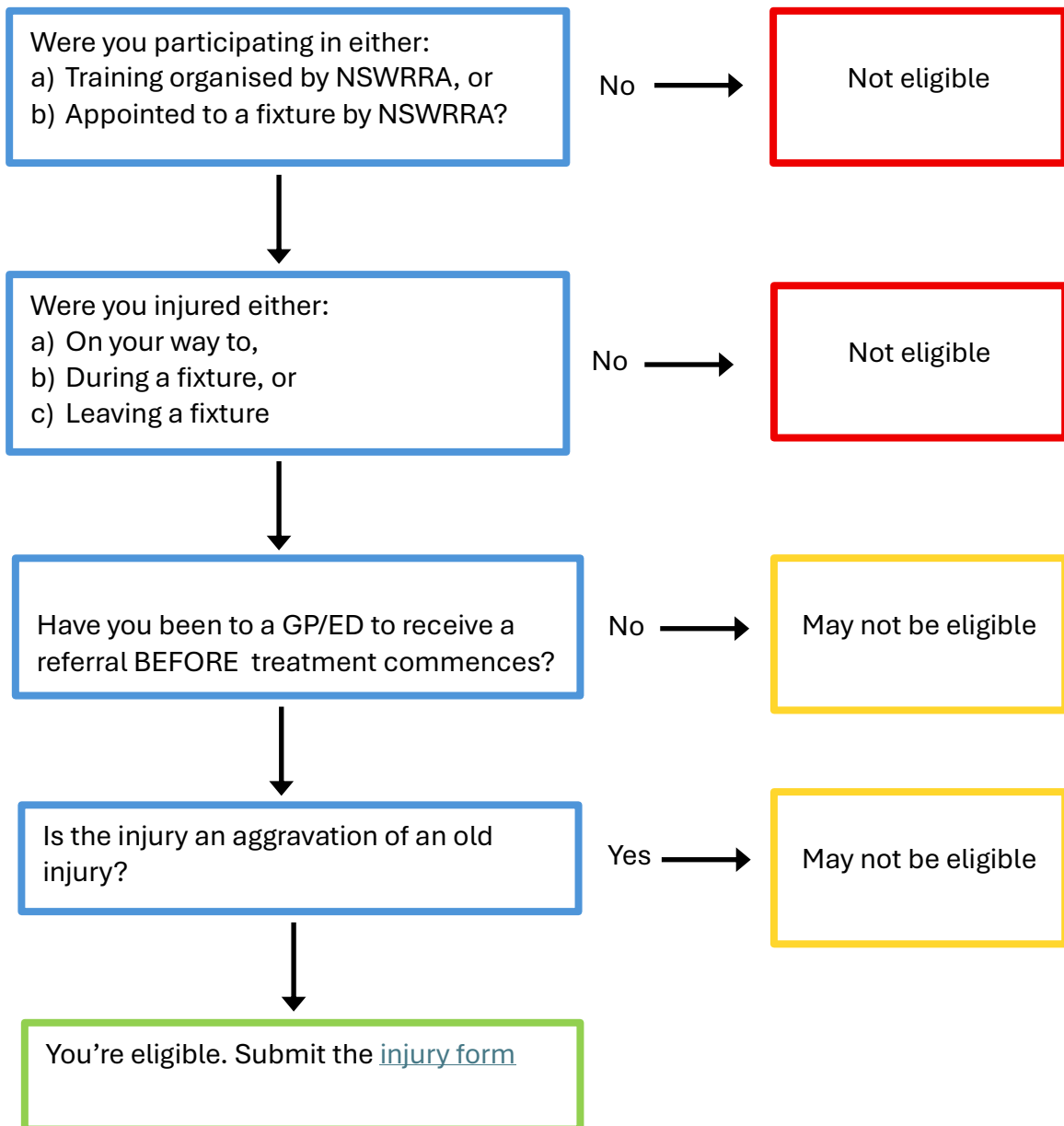


NSWRRRA Referee Injury Decision Tree 2026



Any queries should be direct to [Max](#) or [Alex](#)

Do not select 'school competition' if you intend to make an insurance claim (select club, even if it was a school comp).

Useful links:

[Injury report form](#)

[What is covered](#) (table at top of page, and also FAQs at bottom of page)

[How to make a claim](#) (bottom of the page)